

# INTERNATIONAL TROPICAL TIMBER ORGANIZATION

## ITTO

### PROJECT DOCUMENT

TITLE	INTERNATIONAL WORKSHOP ON INNOVATIONS IN TROPICAL FORESTRY AND FOREST PRODUCT INDUSTRIES (INNOVATIONS FOR TROPICAL TIMBER)
SERIAL NUMBER	PD 268/04 Rev.3 (I)
COMMITTEE	FOREST INDUSTRY
SUBMITTED BY	THE GOVERNMENT OF COTE D'IVOIRE
ORIGINAL LANGUAGE	FRENCH

#### SUMMARY

Innovations in the area of tropical timber processing will bring together in Côte d'Ivoire researchers, timber technologists, product developers, investors, traders and professionals of the sector and the authorities in charge of the policies governing tropical forestry and timber industries.

This meeting will provide the opportunity to discuss the current status of innovation in the areas of tropical forest and timber industries management and to identify the most efficient measures to increase investment in proportion to the innovations introduced in order to meet the requirements of consumers and the changing values of consumers' community.

Tropical timber innovations are primarily related to the Forest Industry Programme. However the programme of the Conference covers the entire timber production and marketing chain and therefore establishes a relationship with the Economic Information and Market Intelligence as well as with the Reforestation and Forest Management component, especially for the moist-forest area of Tropical Africa.

EXECUTING *DIRECTION DE LA PRODUCTION ET DES INDUSTRIES FORESTIERES  
(DIRECTORATE OF FOREST PRODUCTION AND INDUSTRIES), MINISTRY  
OF THE ENVIRONMENT AND WATER AND FOREST*

AGENCY

DURATION 12 MONTHS

APPROXIMATE UPON FINANCING  
STARTING DATE

BUDGET AND PROPOSED SOURCES OF FUNDING	Sources	Contribution in (US\$)	Equivalent in foreign currency
	<b>ITTO</b>	<b>147,960</b>	
	Govn't of C.I.	40,244	
	Industries	36,000	
	<b>TOTAL</b>	<b>224,204</b>	

## CONTENTS

Part I : Context .....	3
1. Origin .....	3
2. Sectoral Policies .....	3
3. Operational Programmes and Activities .....	4
Part II : THE PROJECT .....	6
1. Project Objectives .....	6
2. Justification .....	6
2.1 Problems to address.....	6
2.2 Situation expected at Project completion.....	6
2.3 Strategy.....	7
2.4 Project beneficiaries .....	7
2.5 Economic Aspects .....	7
2.6 Environmental aspects.....	7
2.7 Social aspects .....	8
2.8 Risks .....	8
3. Outputs .....	9
4. Activities .....	9
5. Logical Framework Matrix .....	10
6. Work Plan.....	11
7. Budget (US Dollars).....	12
PART III. OPERATIONAL ARRANGEMENTS.....	13
1. Management Structure .....	13
2. Management, reporting and evaluation.....	14
3. Future operations and maintenance.....	14
1. Compliance with ITTA 1994 Objectives .....	15
2. Compliance with ITTO Yokohama Action Plan 2002-2006 .....	15
ANNEXE A – Profile of the Executing Agency.....	16
ANNEX A1 – Terms of Reference of the International Consultant .....	17
ANNEX A2– Terms of Reference of the National Consultant.....	20
ANNEX B – Curriculum vitae of the nominated National Coordinator.....	22
ANNEX C – Draft Conference Programme.....	25

## **Part I : Context**

### **1. Origin**

The project was originally submitted to ITTO by the Australian Government under Project Title "Innovation '06" and was approved during the 37<sup>th</sup> Session of the Council held in December 2004 in Yokohama. At the 38<sup>th</sup> Session of the Committee of Forest Industry held between 29 May and 2<sup>nd</sup> June 2006, the representative of the submitting country informed the Committee that the support allocated to the Project by its Government was withdrawn and he recommended that another ITTO member country should become the submitting Government for this Project.

Thus, discussions were initiated between ITTO and the Government of Cote d'Ivoire in order to transfer the Project to Côte d'Ivoire.

In order to ensure that the project was consistent with the strategic objectives of forest and timber industry management in Côte d'Ivoire, the scope of workshop activities was modified and focused exclusively on Tropical forests and forest products, especially those from moist-forest areas in Tropical Africa.

Some of the already approved project funds amounting to USD 147,960 (73 980 000 FCFA), will be allocated, inter alia, to cover the cost of six (6) delegates from ITTO Producer member countries: Africa (4), Asia-Pacific (1), Latin America (1) and two (2) delegates from Consumer countries.

Since the 1980s, there has been heightened public awareness about managing the world's forest resources sustainably to minimize potential adverse environmental impacts. The global forest and wood products industries have responded to the challenge of managing and utilizing forest resources sustainably through a number of initiatives including:

- improvements in forest management e.g. implementation of codes of practice, low impact logging etc.;
- certification of forest management and labeling of products from managed forests;
- research in efficient processing and utilization of timber; and
- innovation in harvesting, processing, manufacturing, distribution and marketing of forest and wood products.

Tropical Timber Innovations aim to bring together some of the world's scientists, technologists and innovators in the global industry to review the current state of innovation in the industry, to share key experiences from ITTO-funded SFM Projects, the use of and markets for forest products between ITTO Member countries and to develop strategies for further driving innovation in the industry, in particular in the moist-forest areas of Tropical Africa; to meet changing community values including the needs of the international market place for Côte d'Ivoire et other ITTO Member countries, especially in Africa.

### **2. Sectoral Policies**

A rapidly receding forest cover is undoubtedly the major environmental problem facing Côte d'Ivoire. As it is, natural forests now cover 3.6 million hectares only (not including National Parks and Reserves, estimated at around 2 million hectares), i.e. barely 10% of the country's area, against 12 million hectares in 1960 and 16 million hectares at the turn of the twentieth century. This worrying trend can be explained by a combination of factors: the mining-types of harvesting practices, the charcoal and fuelwood exploitation, a high population growth in both rural and urban areas, with uncontrolled migration flows, a dynamic agricultural sector based on slash-and-burn techniques and cash crops cultivation, bush and forest burning practices, etc..

This rapid and continuous pace of deforestation is synonymous with a loss of forest biodiversity: the number of endangered species is currently estimated at 45 animal species and 50 plant species. Deforestation also means a dramatic decline in timber production - from 4.9 million m<sup>3</sup> in 1980 to 2.2 million m<sup>3</sup> annual average over the past ten years.

Aware of the degradation of the forest estate which sustained significant impacts from human activities, the Government of Côte d'Ivoire undertook various actions including (i) the adoption in 1988 of the Forest Master-Plan (PDF) for 1988-2015 aimed to conserve and rehabilitate the forest estate while developing agriculture (ii) the reform of forest logging policies in 1994 and (iii) a review and diagnosis of the forest sector implemented in 1998 to review and impart new directions to its forest policies.

In 1999, through its Letter of Declaration, the Government enacted a New Forest Policy (NPF) subsequently adopted in conformity with the Forest Master-Plan (*Plan directeur forestier*, or PDF)

The strategies developed under the NPF are based inter alia on the following actions :-

- To promote a management strategy for the rural areas to reconcile as best as possible several development imperatives in the agricultural sector, the animal husbandry sub-sector and the forest sector for the maximum benefit of the local communities concerned ;
- To provide a follow-up to the Government's action for the participation of the private industrial sector, rural communities and individuals ;
- To focus management efforts on specifically targeted forests and combine the improvement of natural forest stand in forest-rich areas with reforestation projects aimed to rehabilitate those areas affected by a more advanced state of degradation ;
- To transfer the ownership of natural trees to the communities ;
- To take into account the environmental dimension of forest management.

### **3. Operational Programmes and Activities**

After the independence of Côte d'Ivoire in 1960, the reduction of the national forest cover led the Côte d'Ivoire State to undertake two major actions: to create the Permanent Forest Estate owned by the State (incl. national parks, forest reserves and gazetted forests) whose protection is entrusted to Governmental forest departments; and to establish the *Société d'Etat pour le Développement des plantations Forestières* – the State Corporation for Forest Plantation Development (SODEFOR) on 15 September 1966, whose initial mission was to implement a reforestation programme in order to restore the national forest cover. The State has been financing the manual and/or mechanical establishment of plantations forests ever since that date.

As it was confronted with the growing and accelerating degradation of the forest resource base, the Côte d'Ivoire State, with the support of the World Bank, embarked upon a large-scale reforestation programme under an initial project implemented between 1978 and 1984, and a second project between 1985 and 1989 which helped restore the forest cover by 5,000 hectares annually.

However, these various programmes have not translated into any significant, nationwide improvement of the forest cover. Thus, a programme of actions for the 1988-1995 period set an initial framework for action towards the rehabilitation of the forest sector and translated into the implementation by SODEFOR of the « Forest Sector Project » (*Projet Sectoriel Forestier*, or PSF) financed through a loan extended by the World Bank and CDC, and various related projects financed by AfDB, EFD, ITTO, WFP, FAC, CFD, CIDA and KFW. The total amount of these external support initiatives was around CFA Francs 57 billion (i.e. US\$ 90 million).

In order to achieve the objectives defined in the new forest policy, the Government has selected the strategic approach contained in the **Programme-Cadre de Gestion des Forêts** (PCGF) (Framework-Programme for the Management of Forests). This Programme, whose implementation has been entrusted to the Ministry of Water and Forest Resources, is to be implemented over a 14-year period subdivided into four successive phases.

Phase I of PCGF is currently under implementation. Pending the start of the various projects constituting Phase II, a number of projects financed by several donors – including inter alia, the ITTO – are currently under implementation in Côte d'Ivoire. They include the following :-

- Management of the Gazetted Forests in Eastern Côte d'Ivoire (KFW/GTZ) ;
- PLDA Daoukro and PLDA Ouelle Ettrokro (CEDEAO) ;
- **PD 24/98 Rev.2 (F)** : « Intensification of teak silviculture » (ITTO) ;

- **PD 22/98 Rev.1 (F)** : « Cloning of the Teak species» (ITTO) ;
- **PD 51/98 Rev.1 (F)** : « Management of forest fire in Côte d'Ivoire on a pilot basis » (ITTO)
- **PD 53/97 Rev.2 (F)** : « Regionalisation of the Volume Tables for Trees of Natural Forests and Plantations » (ITTO) ;
- **PD 52/98 Rev.4 (F)** : «Establishing a Network of Permanent Sampling Plots for Monitoring the Dynamics of Reforestation in Côte d'Ivoire » ;
- **PD 54/00 Rev.3 (F)** : «Genetic Resistance of Iroko to Phytolyra lata – Phase II  
Revision of the forest legislation (FAO).
- **PPD 61/02 Rev. 1 (M)** « Review of the Present Situation and Development of a Strategy and Project for  
Enhancing the National Forestry Statistics Management System » ;
- **PPD 94/04 Rev.1 (F)** : Evaluation of the Status of Forest Resources in Côte d'Ivoire (Côte d'Ivoire)

## **Part II : THE PROJECT**

### **1. Project Objectives**

#### 1.1 Development Objective

The overall objective of the project is to assess the current state of research and development (R&D), innovation and other technological developments in the global forest and wood product industries, and determine policies and strategies to further increase innovation and its uptake, to continually improve the sustainability and competitiveness of the forest and wood products industries of ITTO member countries, especially in the moist-forest area of Tropical Africa.

#### 1.2 Specific Objective

To bring together in Côte d'Ivoire the world's pre-eminent researchers, technologists, innovators, investors, industry participants, policy makers etc. to discuss the current state of innovation in the forest and wood products industries, to share key experiences and lessons from ITTO-funded SFM Projects, the use of and markets for tropical timber products and determine the most effective measures for increasing investment in innovations for the moist-forest area of Tropical Africa.

### **2. Justification**

#### 2.1 Problems to address

Tropical Timber Innovations will investigate and report on constraints to increased investment in, and uptake/transfer of, R&D, innovation and technological developments in the tropical forest and wood products industries.

In this context, the workshop will cover the following components with a particular focus on their practical application to the moist-forest area of Tropical Africa :

- the current state of R&D and innovation including technological developments in the global forest and wood products industries;
- cost-effective commercialization of R&D and innovation, including knowledge sharing and transfer within the global industry;
- how to make forest and wood products industries attractive investment options for the global financing institutions, particularly in ITTO producer member countries;
- opportunities for commercializing non-forest timber products and environmental services such as carbon, salinity, biodiversity and water quality credits;
- how to use R&D and innovation to produce products that consumers want, and thereby further improve timber's market competitiveness against substitute products such as plastics, steel, aluminium and concrete; and
- using R&D and innovation to further improve timber's durability so that it can be protected against destructive agents and thus last longer in service.

#### 2.2 Situation expected at Project completion

Innovations in tropical timber industries will substantially improve knowledge and understanding of the current state of R&D and innovation in the global industry of tropical timber products. The body of knowledge and new information to be generated from Tropical Timber Innovations will assist ITTO producer and member countries – especially those in the moist-forest range of Tropical Africa – to further improve the management and use of their

forest resources. The workshop outcomes will also assist member countries to continually improve their R&D and innovation policies and programmes, and thereby enhance the contribution of the sector to the socio-economic development of respective countries.

Tropical Timber Innovations will also significantly enhance the awareness and knowledge on the forests and timber sector of Côte d'Ivoire among potential customers and investors.

### 2.3 Strategy

The format for the Tropical Timber Innovations Workshop will involve a combination of plenary and focus sessions. The plenary sessions will provide background information for subsequent focus/workshop sessions. The chosen strategy will enable a wide range of issues to be discussed, and recommendations developed for follow-up action by member governments.

### 2.4 Project beneficiaries

The beneficiaries of Tropical Timber Innovations will be the global forest and wood products industries, including ITTO member countries. Tropical Timber Innovations will benefit the global industry by assisting countries in the on-going development and refinement of R&D and innovations policies and strategies to further improve the performance of their forest and wood products industry sectors.

The African and Cote d'Ivoire forest industries will particularly benefit from tropical timber innovations through their increased exposure to potential customers and investors.

### 2.5 Economic Aspects

The economic benefits of Tropical Timber Innovations are manifold and relate to the very survival of the global industry. Firstly, the forest and wood products sector underpins the economies of many ITTO member countries. With increasing market competition from substitute materials, the survival of the global industry depends on continual improvements through innovation.

Secondly, continuation and survival of the international timber trade depends on the community's support for the sector's activities in terms of achieving and being able to demonstrate on-going sustainability. One way of securing the global community's support or "social license" to continue to operate is through continual innovation and improvements in forest management, efficient use of wood including waste reduction and developing products that better meet the needs of the market place.

The outcomes of tropical timber innovations will bring economic benefits by assisting member countries to manage their forest and wood products industries to:

- achieve ecological, social and economic sustainability;
- utilise forest resources efficiently and thereby improve the sector's competitiveness in the international market place. The forest and wood products industries of many countries will not survive if they are not cost-competitive in the international market place; and
- produce and manufacture products which meet consumer expectations, and also compete effectively with substitutes both on price and in performance.

### 2.6 Environmental aspects

Continual improvements in forest management through innovation, scientific and technological developments will lead to enhanced environmental outcomes for the tropical timber sector. Similarly, efficient utilization of forest and timber products has beneficial environmental outcomes as it minimizes harvesting pressures on forests. Innovation in the tropical timber industries can also improve financial viability and therefore the competitiveness of the global industry. This will enable member countries to afford the cost associated with managing their forests sustainably.

## 2.7 Social aspects

A sustainable and economically viable tropical timber industry has many social benefits. The economies of many ITTO member countries depend on the forest and wood products sector, particularly in rural communities. Improving the sustainability and economic viability of the forest sector will improve wealth creation and job prospects for forest-dependent communities. Increased wealth creation will increase the ability of member governments to afford programs such as education, health, infrastructure etc. to support the socio-economic development of their people.

## 2.8 Risks

As with any international workshop and conferences, the major challenge is to attract sufficient expertise among participants, including competent speakers to ensure that the objectives of the project can be attained. This problem will be solved through the assistance of ITTO in the process of identifying the most competent speakers for the Workshop and through the collaboration of international and regional organizations such as FAO, Cirad-Forêts, ATO, etc..



### **3. Outputs**

- Output 1: An international workshop is organized with "Creating wealth and sustainable growth through an innovating tropical timber industry for the 21<sup>st</sup> Century" as main theme;
- Output 2: A strategic document on technological innovation is prepared.

### **4. Activities**

**Output 1 : An international workshop is organized with "Creating wealth and sustainable growth through an innovating tropical timber industry for the 21st Century" as main theme**

The activities relating to this Output are as follows :

- To establish a workshop planning and organization committee;
- To hire national consultants and one international consultant;
- To create a website dedicated to the workshop;
- To prepare the workshop program and other associated events such as social activities and pre- and post-conference field trips;
- To identify and invite competent speakers;
- To promote the workshop at international level;
- To organize and convene the international workshop.

**Output 2: A strategic document on technological innovation is prepared.**

The activities relating to this workshop are as follows:

- To prepare the workshop proceedings/report;
- To edit the workshop report and to disseminate it to participants and ITTO member countries

## 5. Logical Framework Matrix

Project Component	Objectively verifiable indicators	Means of verification	Important Assumptions
<p><b><u>OBJECTIF DE DEVELOPPEMENT</u></b>            The overall objective of the project is to assess the current state of research and development (R&amp;D), innovation and other technological developments in the global forest and wood product industries, and determine policies and strategies to further increase innovation and its uptake, to continually improve the sustainability and competitiveness of the forest and wood products industries of ITTO member countries, especially in the moist-forest area of Tropical Africa.</p>	<p>Meetings to summarize the documents presented and the findings of the workshop.</p>	<p>Final Project Report</p>	<p>None</p>
<p><b><u>OBJECTIF SPECIFIQUE</u></b>            Bring together in Côte d'Ivoire the world's pre-eminent researchers, technologists, innovators, investors, industry participants, policy makers etc. to discuss the current state of innovation in the forest and wood products industries, to share key experiences and lessons from ITTO-funded SFM Projects, the use of and markets for tropical timber products and determine the most effective measures for increasing investment</p>	<p>75% of workshop papers and posters are complete;             75% of invited member countries participate in the event</p>	<p>Final Project Report             Web site</p>	<p>None</p>
<p><b><u>OUTPUT</u></b>  <b>Output 1:</b> An international workshop is organized with "Creating wealth and sustainable growth through an innovating tropical timber industry for the 21<sup>st</sup> Century" as main theme   <b>Output 2:</b> A strategic document on technological innovation is prepared.</p>	<p>Reports of workshop meetings submitted to ITTO and posted on the workshop website.             The strategic document is prepared, published and available (in print and on the web site)</p>	<p>Final Project Report             Web site</p>	<p>None</p>



## 7. Budget (US Dollars)

		TOTAL	ITTO Contribution	Côte d'Ivoire	Industry
10.	<b>Personnel du projet</b>				
	11. 1 national consultant at 1,000 dollars per month for 1 year	12,000	12,000		
	1 national coordinator at 1,000 dollars/month for 1 year	12,000		6,000	6,000
	15. 1 international expert at 27,000 dollars per year	27,000	27,000		
	<b>19. Sub-Total</b>	<b>51,000</b>	<b>39,000</b>	<b>6,000</b>	<b>6,000</b>
30.	<b>Travel costs</b>				
	31. Eight (8) participants from ITTO Member countries (US\$ 6,000 each)	48,000	48,000		
		8,000	8,000		
	32. Two (2) trips @ USD 4,000 each for the International Expert				
	33. D.S.A. for 8 workshop participants @ USD 150.00 each during 5 days	6,000	6,000		
	34. D.S.A for 1 international consultant @ USD 100.00/day during 20 days	2,000	2,000		
	35. Cost of local transportation and field trip	10,000			10,000
	<b>36. Sub-Total</b>	<b>74,000</b>	<b>64,000</b>	<b>0</b>	<b>10,000</b>
60.	<b>Miscellaneous</b>				
	61. Catering and caterers for 4 days	10,000			10,000
	Room rental	10,000		10,000	
	Hire of equipment and operators	5,000		5,000	
	62. Printing costs	6,960	4,960	2,000	
	63. Postage costs	1,000	1,000		
	64. Audio-visual equipment	10,000	10,000		
	65. Auditing	1,000	1,000		
	66. Workshop website	1,000	1,000		
	67. Promotion and outreach	4,000	2,000	1,000	
	68. Phone calls	2,000	2,000		
	69. Miscellaneous		2,303		
	<b>69. Sub-Total</b>	<b>49,960</b>	<b>24,263</b>	<b>18,000</b>	<b>10,000</b>
70.	<b>Management cost of executive board (15%)</b>	<b>26,244</b>	<b>0</b>	<b>16,244</b>	<b>10,000</b>
	<b>79. Sub-total</b>		<b>127,263</b>	<b>16,244</b>	<b>10,000</b>
	<b>SUB-TOTAL</b>	<b>224,204</b>	<b>127,263</b>	<b>40,244</b>	<b>36,000</b>
80	81 ITTO Monitoring and Evaluation		9,737		
	82. ITTO Programme Support Cost (8%)		10,960		
	<b>89. Sub-Total</b>		<b>20,697</b>		
100.	<b>GRAND TOTAL</b>	<b>224,204</b>	<b>147,960</b>	<b>40,244</b>	<b>36,000</b>

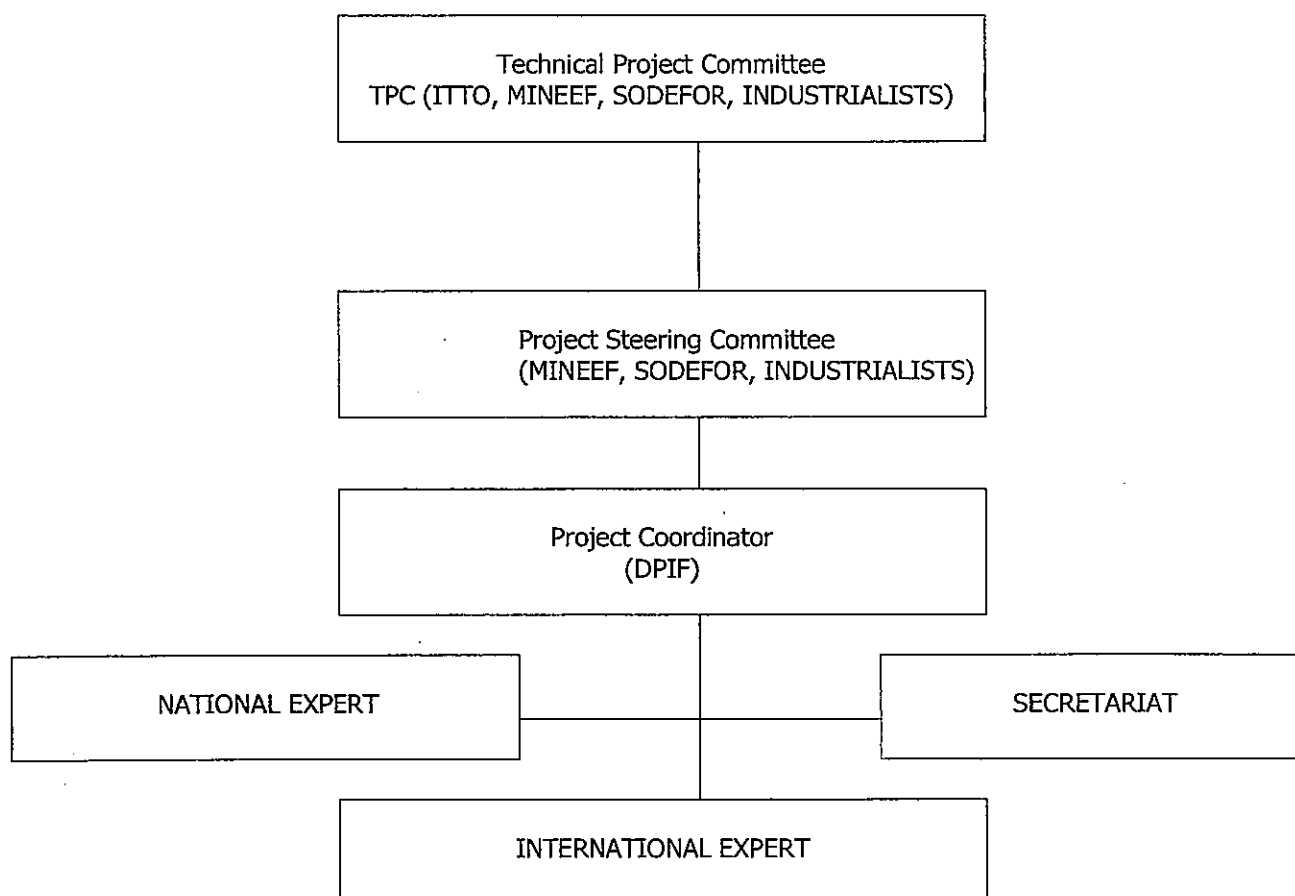
## **PART III. OPERATIONAL ARRANGEMENTS**

### ***1. Management Structure***

MINEEF will manage the planning and organization of the event with the assistance of a Technical Project Committee, a Project Steering Committee, a national expert and an international expert.

#### **PROJECT ORGANIZATIONAL STRUCTURE**

**ITTO Project : International Workhop on innovations in tropical timber and forests industries**



#### **\* Technical Project Committee**

It convenes twice a year and its meetings are attended by one representative of SODEFOR, one representative of ITTO, one representative of timber industrialists and the representative of the Cote d'Ivoire Ministry in charge of forests. It reviews the administrative, technical and financial status of the project and decides any arrangements required to continue the implementation of the project according to the planned schedule, or, if applicable, proposes any appropriate amendments to the implementation schedules and/or modalities.

#### **\* Project Steering Committee**

It comprises one representative of MINEEF, one representative of SODEFOR, one representative of Industrialists. It convenes on request of the Project Coordinator to decide upon any project implementation problems. It validates all project stages, monitors the stage of project progress and validates the modifications called for before adoption.

### **2. Management, reporting and evaluation**

#### **a) Reports**

- Two (2) progress reports will be submitted to ITTO in the entire project duration;
- One (1) completion report will be submitted to ITTO three (3) months after project completion.

#### **b) Management, review and monitoring visits to the Organizing Committee**

Funds have been earmarked from the workshop budget to enable ITTO to monitor the project progression.

#### **c) Evaluation**

Evaluation of the project progress and results will be conducted in accordance with ITTO rules of procedures.

### **3. Future operations and maintenance**

Future, post-project activities involve the preparation and dissemination of the conference proceedings. These may spread for 3 months after the workshop. The proceedings will be available in electronic format on the workshop website with links to the MINEEF Web pages.

## **PART IV. TROPICAL TIMBER FRAMEWORK**

### **1. Compliance with ITTA 1994 Objectives**

Tropical Timber Innovations aim to bring innovators, researchers, technologists, policy makers and consumers and producers of tropical and temperate timbers to discuss how to use innovation to further improve the global industry. In this context, the objectives of Tropical Timber Innovations are broadly consistent to those of the ITTO. Specifically, the objectives of Tropical Timber Innovations meet the ITTO objective of promoting and supporting research and development to improve forest management and the efficient utilization of global forest resources, as well as increasing the capacity of producers to conserve and enhance other forest values.

Tropical Timber Innovations objective of developing strategies to assist producers and consumers of timbers to promote and implement innovation is also consistent with the ITTO objective of providing effective framework for consultation, international co-operation and policy development in support of the international trade in timber. Innovation in the forest and wood products industry will also promote the expansion and diversification of international trade in timber, and thereby assist the sustainable management and use of global forest resources.

### **2. Compliance with ITTO Yokohama Action Plan 2002-2006**

Tropical Timber Innovations complies with the objectives of the ITTO Action Plan's "cross-cutting strategies". The conference outcomes would contribute significantly to advancing cross-cutting strategies through:

- enabling conference participants to share information, knowledge and technology to improve sustainable forest management, product processing, utilization and an understanding of the market place as related to the ITTO's priorities; and
- providing opportunities for strategic alliances and collaborative arrangements in support of global research and development activities, which will improve understanding of the market place, efficient processing, industrial utilization and better forest management.

## **ANNEXE A – Profile of the Executing Agency**

The project will be implemented under the responsibility of the Ministry of Environment, Water and Forest, represented by the Directorate of Forest Production and Industries (DPIF).

The Director of DPIF is to be appointed National Project Coordinator. It will secure the coordination of activities.

A national consultant and an international consultant will be hired through a restricted tendering process.

### **1- Missions de la Directorate of Forest Production and Industries (DPIF) :**

Under Decree N° 2006-65 of 13 April 2006 providing for the organization of the Ministry of Environment, Water and Forest, the Directorate of Forest Production and Industries assumes the following missions :

- To promote the conditions required for the sustainable use of forest resources;
- To process the application for forest concession approval from timber industries, timber permits and other forest product exploitation titles;
- To promote the use of lesser-known forest species;
- To design, edit and distribute forest logging and timber industry monitoring documents and other documents for the exploitation of other non-timber forest products;
- To promote the further processing and value-added process of timber products and NTFP except faunal products and by-products;
- To certify timber products and non-timber, harvestable forest products.

To carry out its mission, DPIF has two (2) Sub-divisions and 2 distinct Departments:

- The Sub-division of Forest Production and Certification;
- The Sub-division of Forest Industries and NTFP;
- The Inspection Department for the Abidjan Autonomous Port;
- The Inspection Department for the San-Pédro Autonomous Port.

### **2- Mandate of the National Coordinator**

He is the overall officer in charge of project implementation. He commits expenditures, oversees the sound operation of the project and reports to the donor institution (ITTO). He attends all project meetings and reports implementation problems and difficulties. He proposes solutions. He ensures that the implementation of the project is consistent with the Project Document. He nominates project personnel to be hired as well as the equipment and goods to be purchased by the Project for its sound implementation.

**Qualification:** A Water-and-Forest Engineer with a timber and forest management project implementation experience

**Place of posting:** Abidjan

**Duration of the mandate:** 12 months



## **ANNEX A1 – Terms of Reference of the International Consultant**

<p><b>TERMS OF REFERENCE OF THE INTERNATIONAL CONSULTANT</b></p>
--

**PROJECT TITLE:**                    **International Workshop on Innovations in Tropical Forestry and Forest Product Industries**

**NAME OF POSITION:**            International Consultant in support of the organization and conduct of an international workshop on Innovations in the Tropical Forest Industries

### **GOAL ASSIGNED TO THE CONSULTANT**

To provide technical and organizational support to the project team and the Government of Côte d'Ivoire to successfully implement the International Workshop on Innovations in Tropical Forestry and Forest Product Industries to be held in Abidjan

### **DUTIES OF THE CONSULTANT**

Under the supervision of the Ministry of the Environment, Water and Forests (MINEEF), in collaboration with the competent directorates of the Ministry, the agencies governed by the MINEEF and the Project Coordinator, the International Consultant will implement the following tasks:

- To ensure the sound functioning of the Organizing Committee established by the Government of Côte d'Ivoire;
- To ensure the consistency of the Workshop Programme and compliance with international standards;
- To ensure that all participants have been effectively invited and that all their travel requirements have been met;
- To ensure in particular that international speakers have been invited that their journeys to Côte d'Ivoire are confirmed.
- To actively participate in the establishment of a communication (Web site, public notification) and advocacy system to promote the Workshop in order to give it the required international profile;

- In collaboration with the National consultant and the Project Coordinator, to ensure that industrial operators and artisans of Côte d'Ivoire are effectively involved in the organizational aspects of the Workshop, including the satellite exhibitions;
- To prepare in collaboration with the Project team the final workshop report/proceedings.

### **PROFILE OF THE EXPERT**

- To hold a college degree in Forestry (Forest Management or Forest Industries) or to have graduated in Business Management studies;
- To have an extensive experience in international conference organization including having held a leading position in the organization of at least one such conference;
- To have a sound command of writing techniques for workshop proceedings;
- To be fully conversant in both French (written and spoken) and English languages;
- To be a national of an ITTO Member State;
- To have a sound knowledge of ITTO Procedures.

**DURATION** : The total duration of the Expert's mission is three **(2) months** [sic] without interruption.

### **FUNDING AND REMUNERATION SCHEDULE**

Funding requirements are fully covered by the ITTO Budget.  
Remuneration payments are scheduled as follows:

- 30% at project start,
- 40% upon submitting the draft report/proceedings,
- 30% upon submitting the final report/proceedings

### **APPLICATION FILE**

- ❖ A technical offer including a curriculum vitae and a description of the strategies envisaged for conducting the mission;
- ❖ A cost quotation priced in FCFA.

### **SUBMISSION OF APPLICATIONS AND LIMIT DATE FOR RECEIPT:**

The application files must reach the following addresses no later than 45 days after the publishing date of the public notice:

by E-Mail : [cadingra2002@yahoo.fr](mailto:cadingra2002@yahoo.fr)

or by postal mail : Attention to **Madame ADINGRA Chantal, Directeur des Etudes, de la Planification et de l'Evaluation au Ministère de l'Environnement et des Eaux et Forêts.**  
06 BP 1484 Abidjan 06 Côte d'Ivoire

**The successful candidate will be individually informed of his/her selection by both postal mail service and email.**

### **INFORMATION:**

For further information, the applicants are kindly requested to contact the following persons:

- ❖ **Le Directeur des Etudes, de la Planification et de l'Evaluation du MINEEF**  
tél : (225) 20 22 30 27 / (225) 07 10 90 84  
E-mail : [cadingra2002@yahoo.fr](mailto:cadingra2002@yahoo.fr)
  
- ❖ **Le Directeur chargé des Projets à la SODEFOR**  
tél. : (225) 22 48 29 48  
Fax : (225) 22 44 99 07  
E-mail : [mekouame@yahoo.fr](mailto:mekouame@yahoo.fr)

## ANNEX A2– Terms of Reference of the National Consultant

<p>TERMS OF REFERENCE OF THE NATIONAL CONSULTANT</p>
--

**INTITULE DU PROJET:** International Workshop on Innovations in Tropical Forestry and Forest Product Industries

**NAME OF POSITION:** National Consultant in support of the organization and conduct of an international workshop on Innovations in the Tropical Forest Industries

### **GOAL ASSIGNED TO THE CONSULTANT**

To provide technical and organizational support to the project team and the Government of Côte d'Ivoire to successfully implement the International Workshop on Innovations in Tropical Forestry and Forest Product Industries to be held in Abidjan

### **DUTIES OF THE CONSULTANT**

Under the supervision of the Ministry of the Environment, Water and Forests (MINEEF), in collaboration with the competent directorates of the Ministry, the agencies governed by the MINEEF and the Project Coordinator, the National Consultant will implement the following tasks:

- To ensure the sound functioning of the Organizing Committee established by the Government of Côte d'Ivoire;
- To ensure the consistency of the Workshop Programme and compliance with international standards;
- To ensure that all participants have been effectively invited and that all their travel requirements have been met;
- To prepare, in collaboration with the Project Team, the documents relating to:
  - The forest policy of Côte d'Ivoire ;
  - In particular the presentation of the forest industries of Côte d'Ivoire ;
- To prepare, as satellite events, the exhibition of forest products from the industrial and artisanal sectors of Côte d'Ivoire;
- In collaboration with the Project Coordinator, to ensure that the industrial operators and artisans of Côte d'Ivoire are effectively involved in the organization of the workshop, including the aspects relating to the satellite exhibitions.
- To participate, in collaboration with the Project Team, in the preparation of all workshop reports.

## **PROFILE OF THE NATIONAL CONSULTANT**

- To hold a college degree in Forestry (Forest Management or Forest Industries) or to have graduated in Business Management studies;
- To have an extensive experience in international conference organization including having held a leading position in the organization of at least one such conference;
- To have a sound command of writing techniques for workshop proceedings;
- To be fully conversant in both French (written and spoken) and English languages;
- To be a national of Côte d'Ivoire

**DURATION** : The total duration of the Expert's mission is three (12) months [sic] without interruption.

## **FUNDING AND REMUNERATION SCHEDULE**

Funding requirements are fully covered by the ITTO Budget.  
Remuneration payments are scheduled as follows:

- 30% at project start,
- 40% upon submitting the draft report/proceedings,
- 30% upon submitting the final report/proceedings

## **APPLICATION FILE**

- ❖ A technical offer including a curriculum vitae and a description of the strategies envisaged for conducting the mission;
- ❖ A cost quotation priced in FCFA.

The application files must reach the following addresses no later than 45 days after the publishing date of the public notice:

by E-Mail : [cadingra2002@yahoo.fr](mailto:cadingra2002@yahoo.fr)

or by postal mail : Attention to **Madame ADINGRA Chantal, Directeur des Etudes, de la Planification et de l'Evaluation au Ministère de l'Environnement et des Eaux et Forêts.**  
06 BP 1484 Abidjan 06 Côte d'Ivoire

**The successful candidate will be individually informed of his/her selection by both postal mail service and email.**

## **INFORMATION:**

For further information, the applicants are kindly requested to contact the following persons:

- ❖ **Le Directeur des Etudes, de la Planification et de l'Evaluation du MINEEF**  
tél : (225) 20 22 30 27 / (225) 07 10 90 84  
E-mail : [cadingra2002@yahoo.fr](mailto:cadingra2002@yahoo.fr)
- ❖ **Le Directeur chargé des Projets à la SODEFOR**  
tél. : (225) 22 48 29 48  
Fax : (225) 22 44 99 07  
E-mail : [mekouame@yahoo.fr](mailto:mekouame@yahoo.fr)

## **ANNEX B – Curriculum vitae of the nominated National Coordinator**

### **OUALOU Kollou Beausséjour**

Born on 15 August 1957 in Bocanda, Côte d'Ivoire

A Côte d'Ivoire national

Married, one daughter

Engineer of Water and Forests, graduated from the University Laval in Québec.

Language spoken, read and written: French

Basic knowledge of English and Spanish

IT skills (Word and Excel)

### **QUALIFICATION**

Holder of a B.A. in Natural Sciences (University of Côte d'Ivoire in Abidjan), a Master ès Forest Sciences (Université Laval in Québec) and one Post-graduate degree in Bio-Engineering and Agronomic Sciences (FUSA in Gembloux, Belgium)

### **PROFESSIONAL EXPERIENCE**

Responsible of studies at the Directorate of Agriculture and Animal Resources in Abengourou (1990 – 1992)

Researcher and Director of the Agro-forestry Division at IDEFOR/DFO – Ministry of Tertiary Education, Scientific Research and Technological Innovation (1992–1998)

Director of the Regional Maintenance Unit of the Rural Land-Use and Land Management Plan at the Ministry of Agriculture, Soubré (1998)

Assistant-Director of the Forest Police at the Forest Police and Litigation Department (1998 – 2000)  
Chief Inspector of the Forest Product Sanitary and Quality Control Board at the Abidjan Harbour, and National Coordinator of the Côte d'Ivoire Forest Law Revision Project (2003 – 2005)

Director of the Forest Production and Industry Department since 18 May 2005

Participation at over thirty national and international workshops and seminars

Several professional traineeships attended, including with CIRAD – Forêts, ENGREF, AFIE, BSTF (France);  
CNRA (Cameroon), PFR (Rural Land-use Plan) Bingerville

## **PUBLICATIONS AVAILABLE AT THE NATIONAL AGRONOMIC RESEARCH CENTRE**

Gestion de l'arbre dans les systèmes agroforestiers à base de cacaoyers en basse Côte d'Ivoire : Une étude expérimentale dans la zone d'Oumé

OUALOU KOLLOU, Gembloux faculté universitaire, 1997,

64p. Mémoire (diplôme d'études approfondies en sciences agronomiques et ingénierie biologique)

Côte d'Ivoire ; agroforesterie ; plante ligneuse ; culture en mélange

COTE : DG 96

La replantation des cacaoyères par des techniques agroforestières

KONAN ; Ahoutou ; Koffi ; N'Goran ; Oualou kollou ; IDEFOR.

Institut des forêts. Département café Cacao- Département foresterie. Abidjan (CI) n.p., Symposium Régional sur la Recherche est le Développement en agroforesterie dans les basses terres humides d'Afrique de l'Ouest, Yaoundé CM, 4-8 Déc 1995 Afrique au Sud du Sahara ; agroforesterie ; Fertilisation ; Légumineuse ; Restauration du sol ; Théobroma cacao

COTE : DG/A/212

Contribution de l'agroforesterie à la régénération cacaoyère dans la région d'Oumé en basse Côte d'Ivoire

OUALOU Kollou GNAHOUA. G.M. BALLE ; P. ; N'GORAN , Alice ; IDEFOR. Institut des forets. Abidjan (CI) ; Abidjan, IDEFOR ; 15 p.

Côte d'Ivoire ; Régénération ; Plantation ; Légumineuse ; Arbre

COTE : DG/A/244

Quelques stratégies pour un développement écologique et durable de l'environnement rural et forestier en Côte d'Ivoire ?

OUALOU KOLLOU, Abidjan, IDEFOR, p.209-216

Côte d'Ivoire ; Environnement , Développement rural ; Ecologie ; Foresterie

**COTE : DG/A/287**

La Jachère arborée et la gestion durable de l'espace rural

OUALOU KOLLOU ; N'GORAN ; Alice ; GNAHOUA ; G.M. ; BALLE P. , Abidjan ; IDEFOR/DFO ; 5 P.

Côte d'Ivoire ; Jachère, Dégradation ; Terre ; Gestion

**COTE : DG/A/292**

Quelles stratégies pour un développement écologique et durable de l'environnement rural et forestier en Côte d'Ivoire ?

OUALOU KOLLOU ; IDEFOR .Institut des Forêts. Département foresterie. Abidjan (CI) IDEFOR ; P. 209-216

Côte d'Ivoire ; Développement ; Ecologie ; Forêt

COTE : DG/A/303

La jachère arborée et la gestion durable de l'espace rural OUALOU KOLLOU ; N'GORAN ; Alice, GNAHOUA ; Guy Modeste ; BALLE ; P. IDEFOR. Institut des forêts. Département n.p.

Côte d'Ivoire ; Jachère ; Eptorium odoratum ; Acacia spp; Cajanus, cajan ; Albizia spp.

COTE : DG/A/307

Evolution de la fertilité d'un sol au cours de quatre ans de culture suite à une jachère arborée de six ans : Cas d'une zone de forêt humide en Côte d'Ivoire

N'GORAN, Alice, GNAHOUA , Guy Modeste, OUALOU KOLLOU ; BALLE ; Pity ; Christian Floret et Roger pontanier , P. 101-105. Atelier Jachère et maintien de la fertilité, Bamako, 2-4 Oct. 1997

Côte d'Ivoire ; Fertilisation ; forêt humide ; Jachère ; Rendement

COTE : DG/A/374

Jachère arborée et gestion durable de l'espace rural

OUALOU K. ; N'GORAN ; Alice ; GNAHOUA ; Guy Modeste ; CNRA.

Centre National de Recherche Agronomique. Abidjan (CI) ; P. 21-27 (AISA Développement)

Côte d'Ivoire ; Jachère ; Gestion ; Environnement ; Sol

COTE : DG/A/509

Réinstallation des paysans volontaires : stabilisation de l'agriculture par des techniques Agroforestières

OUALOU Kollou ; GNAHOUA ; Guy Modeste ; N'GORAN ; Alice, Abidjan, IDEFOR, 1996 16 P.

Agroforesterie ; Jachère ; Verger ; Legumineuse ; Culture en mélange Albizzia ; Theobroma cacao ; Musa

COTE : GA 737

Fiche technique : pépinière et plantation légumineuses ligneuses à croissance rapide des genres Acacia et albizia

OUALOU KOLLOU ; IDEFOR. Institut des forêts. Abidjan (CI) ; Abidjan ; IDEFOR ; 1994 ; 5 P.

Acacia ; Albizia ; Legumineuse ; Pépinière ; Plantation ; Production ; Seguié

COTE : GA 1148

Réinstallation des paysans volontaires à la Téné : Bilan de la campagne de 1994 perspective en 1995

OUALOU KOLLOU ; GNAHOUA, Guy Modeste ; BALLE ; Pity ; IDEFOR. Institut des forêts Abidjan (CI) , Abidjan, IDEFOR, 1995

Agroforesterie ; Téné

COTE : GA 1153

CV certified true

Abidjan, 7 July 2006



## **ANNEX C – Draft Conference Programme**

### **OBJECTIVES OF THE CONFERENCE**

To create the tropical timber industry of the 21st Century through :

- Durability and innovation,
- Changes in management practices, behaviour and outlooks,
- The establishment of better relations between the industry, industrial production and the communities,
- A better anticipation of changing consumer demands and community values.

### **THEME OF THE CONFERENCE**

“Creating wealth and sustainable growth through an innovating tropical timber industry for the 21<sup>st</sup> Century”

### **PROPOSED CONFERENCE PROGRAMME**

- Innovating systems, methods and processes to:
  - To make the tropical timber industry innovating and sustainable for the 21<sup>e</sup> Century
  - To encourage changes in the management and behaviour in the community and the involvement of stakeholders
  - To establish the best relationship between the industry, products and community
  - To anticipate the highly changing demands of consumers’ and community values
- Innovations in :
  - The management of natural tropical forests and industrial plantations
  - The design promotion and marketing of products
  - Marketing, technological knowledge and technology transfer
- Latest technological innovations, including research results ready or soon to be ready for industrial applications
- Information, communication and innovation technologies in the tropical timber industries in the 21<sup>th</sup> Century
- Policies encouraging innovations within the tropical timber industry in the 21<sup>st</sup> Century.

### **TARGET AUDIENCE**

- Entrepreneurs, investors and corporate managers and leaders in the industry
- Managers involved in the tropical timber Industry
- Inventors, scientists and developers of technologies
- Research funding institutions
- Political authorities, policy-makers engaged in the promotion of innovation
- International Institutions (FAO, World Bank, GTZ/KFW, BAD, Embassy...)
- Trade practitioners

## **DEFINITION OF INNOVATION**

*For the purpose of this Workshop, innovation is defined as “the range of activities that encourage the marketing of new technologies, and efficient ways of adding value to the forest and timber products the promotion of sustainability in the industry”.*

## **KEY SUBJECTS**

“An innovating and sustainable tropical timber industry in the 21<sup>st</sup> Century”

## **SUBJECTS/THEMES OF THE VARIOUS SESSIONS**

**INNOVATING TECHNOLOGIES FOR IMPROVING THE PRODUCTIVITY OF NATURAL TROPICAL FORESTS**

**INNOVATING TECHNOLOGIES FOR IMPROVING THE PRODUCTIVITY OF INDUSTRIAL TROPICAL PLANTATIONS**

**INNOVATING TECHNOLOGIES TO REDUCE THE NEGATIVE IMPACTS OF TROPICAL TIMBER HARVESTING AND TRANSPORT**

**INNOVATING TECHNOLOGIES FOR IMPROVING RECOVERY RATES (ASSESSING THE STANDARD OF FORESTRY OPERATIONS, PROCESSES AND MANUFACTURING)**

**THE ROLE OF INFORMATION AND COMMUNICATION TECHNOLOGIES FOR ADDING VALUE TO TROPICAL TIMBER**

**INNOVATING TECHNOLOGIES FOR IMPROVING TROPICAL TIMBER DRYING PERFORMANCE**

**THE NEW COMPETITIVE PRODUCTS MANUFACTURED FROM TROPICAL TIMBER**

**INNOVATING TECHNOLOGIES FOR IMPROVING GLUE SYSTEMS FOR TROPICAL TIMBER**

## **FIELD TRIPS AND EDUCATIONAL VISITS**

Educational visits will be arranged to highlight examples of the industrial value chain, including:

- Forestry and logging operations
- Timber processing and product manufacturing operations

## **DATE AND VENUE OF WORKSHOP**

Côte d’Ivoire proposes that the international workshop on innovations in the tropical forestry and timber industries take place from **11 to 15 March 2008** at the “Hôtel Ivoire”, Abidjan